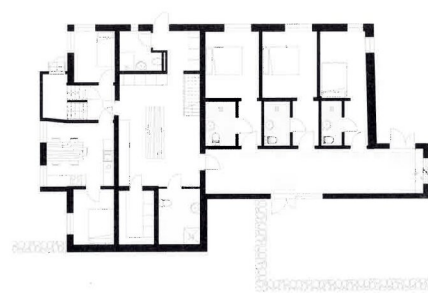
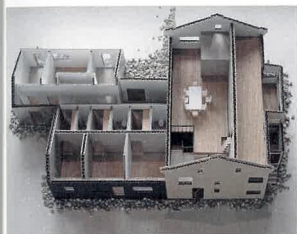
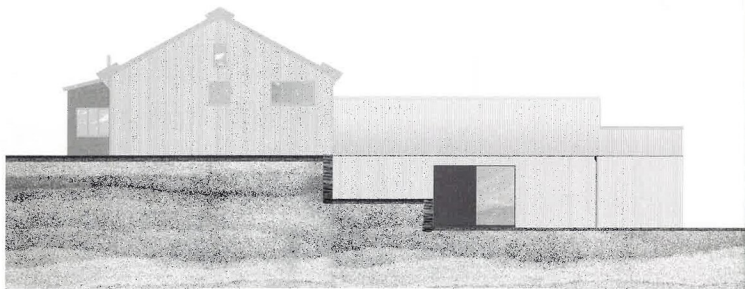


Giving a new purpose

Studio Bua have used a vernacular approach to form a cultural retreat using an abandoned farmhouse in Iceland





The work by Studio Bua "not only involved renovating the main house, but also rebuilding and enlarging the adjoining sheepshed," they say. "The new entrance hall and connection to the farmhouse has been given generous dimensions, allowing it to double as an exhibition space." You can book a stay online at nyp.is

"LOCAL BUILDERS AND CRAFTSMEN HELPED DEVELOP THE PROJECT"

Rediscovering the potential of an isolated site, located just over a three-hours' drive from Reykjavik on the west coast of Iceland, Studio Bua have designed updates to the Nýp Guesthouse and cultural retreat. The current owners began rebuilding the 1939 farmhouse in 2001, creating a cultural hub to host exhibitions, lectures, courses and workshops. Studio Bua's role was to "conceive a design that would make better use of the existing facilities, allowing for more multifunctional spaces," they say. The farmhouse overlooks the Breiðafjörður Nature Reserve therefore the architects took a vernacular approach, referencing local turf homes and making use of local labour, techniques and materials such as stone-turf retaining walls and handmade tiles made from local clay. "We inserted an additional floor into the barn to create a raised event space with a series of openings capturing views to the mountains and the fjord. Driftwood, salvaged from a nearby beach, has been used as columns to support the new floor. Steel handrails, timber doors and beams have been salvaged from building sites in Reykjavik old town." studiobua.com